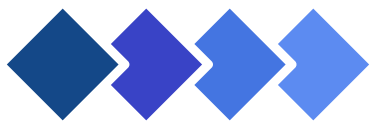


Serve more than Expected



www.eagleassurancehouse.com





We Serve **Quality Assurance & Supplier management** and confident that our service will help you maintain the quality of product and protect your business from losses.



YOU NEED AN INSPECTION, BUT YOU DON'T KNOW WHOM TO APPOINT

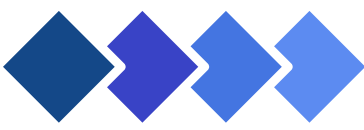


MORE INFO

www.eagleassurancehouse.com

CALL US

+91 97142 79694



OUR QUALITY ASSURANCE SERVICES

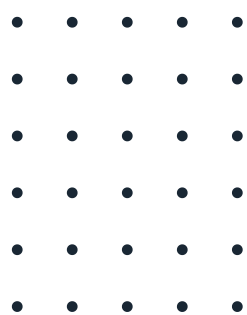
- ✔ Factory Audit
- ✔ Sample Matching & Product Development
- ✔ Pre-Production Inspection
- ✔ During Production Inspection
- ✔ Pre-Shipment Inspectionn
- ✔ Pallet Packing Witness
- ✔ Container Loading Inspection





WHY FACTORY AUDIT NEED?

- ✔ Do you want to make sure your suppliers are reliable and capable before integrating them into your supply chain?
- ✔ Factory audits are one of the best ways to get full pictures of your supplier sourcing and operational policies and ensure that they align with your company's brand image.
- ✔ Verifies that your supplier's manufacturing facilities are suitable to produce your product.
- ✔ Identifies and mitigates potential quality, operational and ethical risks.
- ✔ Evaluate the competence of factory management





WHY PRE- PRODUCTION INSPECTION?

- ✔ **Prior to start mass production, our team verifies that the specific requirements conform to your specification**
- ✔ **This process ensures that specifications are well understood and verified.**



WHY SAMPLE MATCHING INSPECTION?

- ✔ **Color plays a major role in characterize the quality and appearance of the product.**
- ✔ **With the use of sample matching inspection, you will be able to maintain your product color consistency and deliver quality to your customer.**



WHY DURING PRODUCTION INSPECTION?

- ✔ **During production inspection (DPI) known as online, Is Quality control inspection conduct while production is underway.**
- ✔ **These quality control inspections are conducting during / Online production when only 10- 15% of units are completed. During this inspection we will identify deviation and gave feedback on corrective measure, we will recheck defect during the pre Shipment inspection to confirm they have been corrected.**
- ✔ **At each stage of production process, our inspector will produce inspection report, together with supporting pictures to provide you with a comprehensive overview and giving you all the information and data you need.**



WHY PRE-SHIPMENT INSPECTION?



Performing a Pre-Shipment inspection helps reduce the risk associated with receiving defective product.



Our Quality inspector provides detailed feedback.



Avoid returns and protect your brand's image.



Ensure that your supplier has met all agreed upon specification.



WHY CONTAINER LOADING INSPECTION?



At the end of supply chain, we offer container loading inspection at factory.



Inspector supervising the loading process, monitoring the quantity of the packed goods.



Checking the storage and conditions of container.



Right goods are loaded into container, no replacement of product possible.



Ensure the products are transported in appropriate conditions (Limitation of broken goods due to loading).



Improve your sourcing efficiency

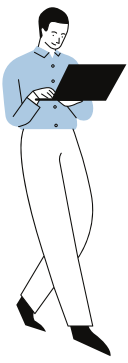


Save your money and save your time.

WHY SUPPLIER MANAGEMENT NEED?



- ✓ Supplier management is an essential part of ensuring maximum value for an organization's money. With the right supplier lifecycle and risk management tools, you can make smarter procurement decisions and streamline processes for improved compliance
- ✓ Supply chain management is important because it can help achieve several business objectives. For instance, controlling manufacturing processes can improve product quality, reducing the risk of recalls and lawsuits while helping to build a strong consumer brand
- ✓ Monitoring and improving supplier performance
- ✓ Reduced supply chain risk.
- ✓ Reduced costs
- ✓ Increased efficiency
- ✓ Minimizes price volatility
- ✓ Outsourcing certain activities
- ✓ Continual improvement of operations



Inspection execution Procedure

1



GET PURCHASE ORDER

2



TEAM CO-ORDINATE WITH
SUPPLIER

3



APPOINT SCHEDULE

4



CONDUCT INSPECTION

5



RELEASE REPORT



Why choose us ?

Commitment
to work

Solid
Teamwork

Standard of
Excellence



Cost Effective

We are local presence in Morbi, So can conduct inspection 24x7.

Qualified and experienced team

Management has technically well sound in ceramic industries.

After get Purchase order our team are maintain live updates of production planning schedule.

We listen to what customers want



Serve more than Expected



+91 9714279694



Office No. 13, First Floor Sankalp Plaza, Nr.Avani
Chokdi Morbi -363641 Gujarat,India



info@eagleassurancehouse.com

Thank You

